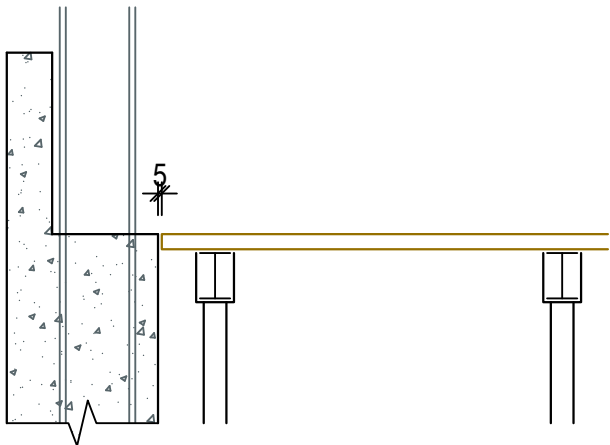


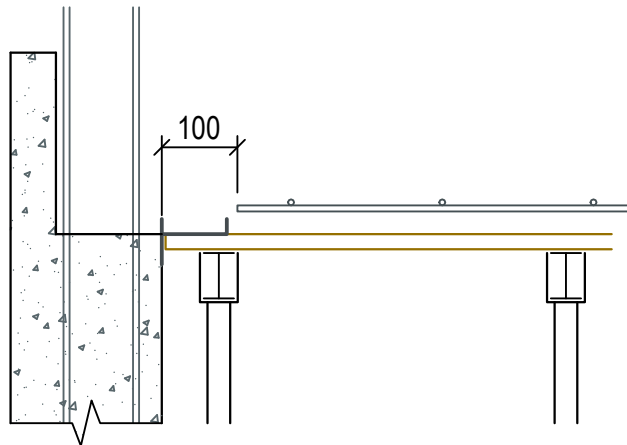
1

Coulage de la tête de voile avec réservation  
Coffrage du plancher



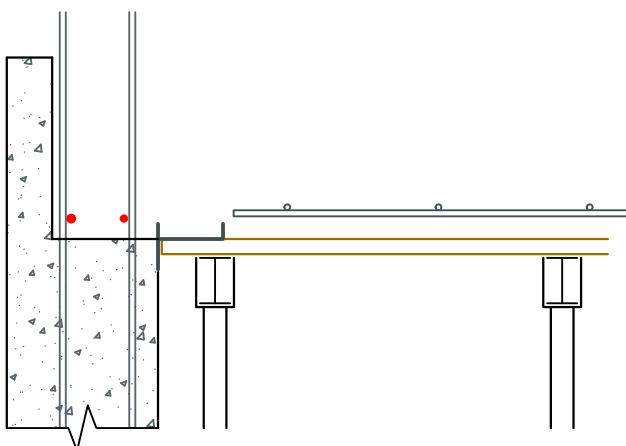
2

Pose de la nappe de treillis inférieure  
Installation du capot h



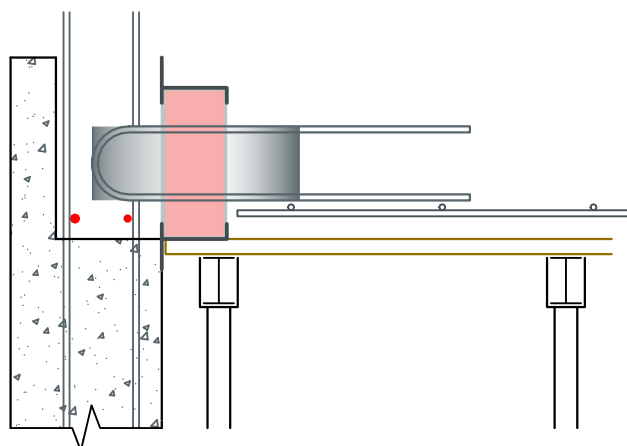
3

Pose de 2 filants Ø10mm (HA10) en tête de voile



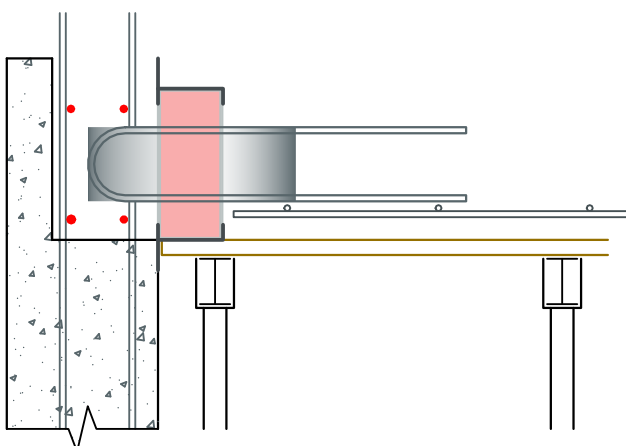
4

Installation du SLABE 8  
Installation du capot h



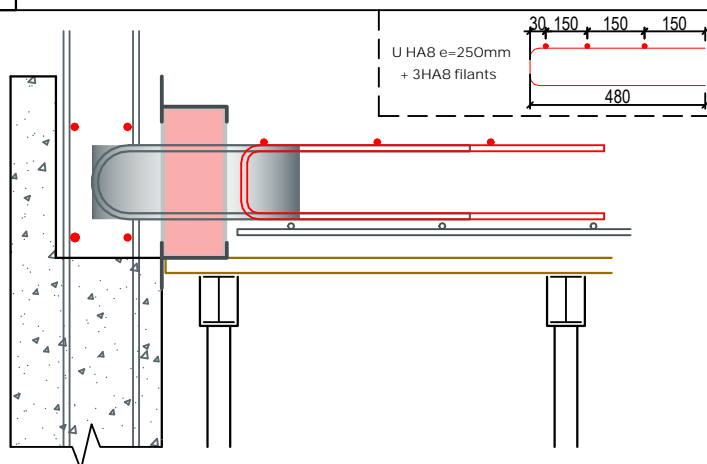
5

Pose de 2 filants Ø8mm (HA8) en tête de voile



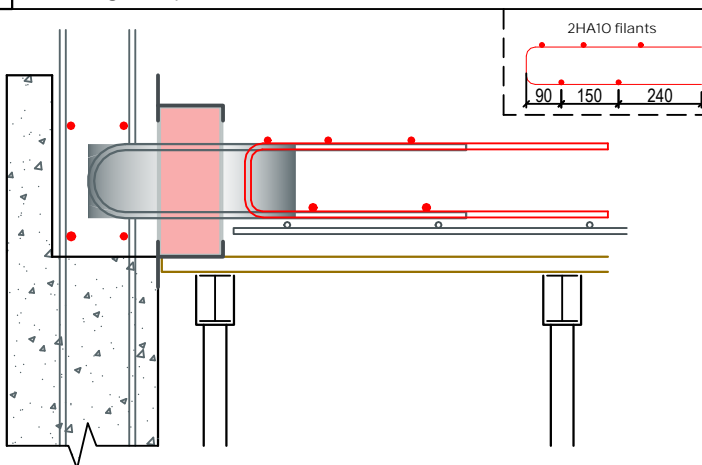
6

Installation du chaînage de plancher



7

Pose de 2 filants Ø10mm (HA10) en nappe inférieure du  
chaînage de plancher



8

Coulage de la tête de voile et du plancher

