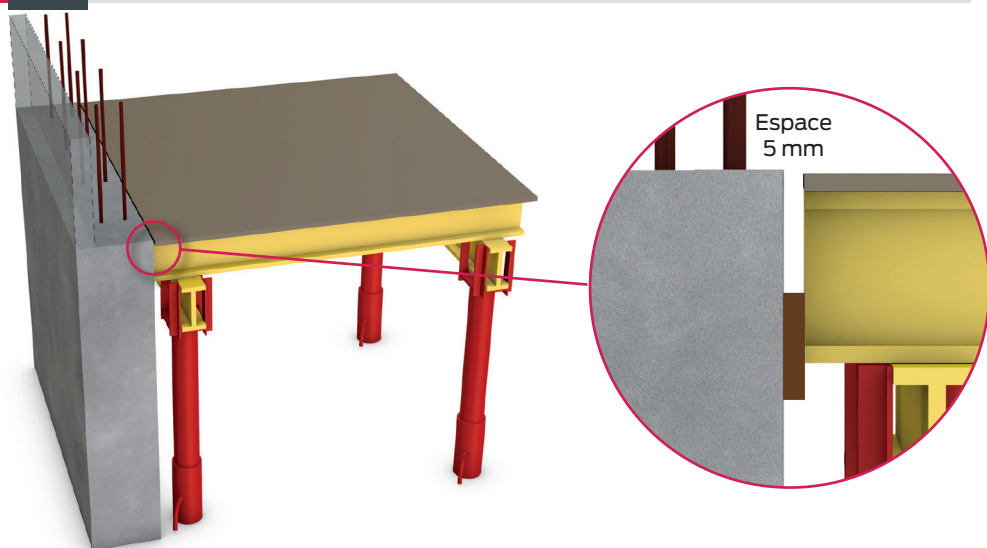
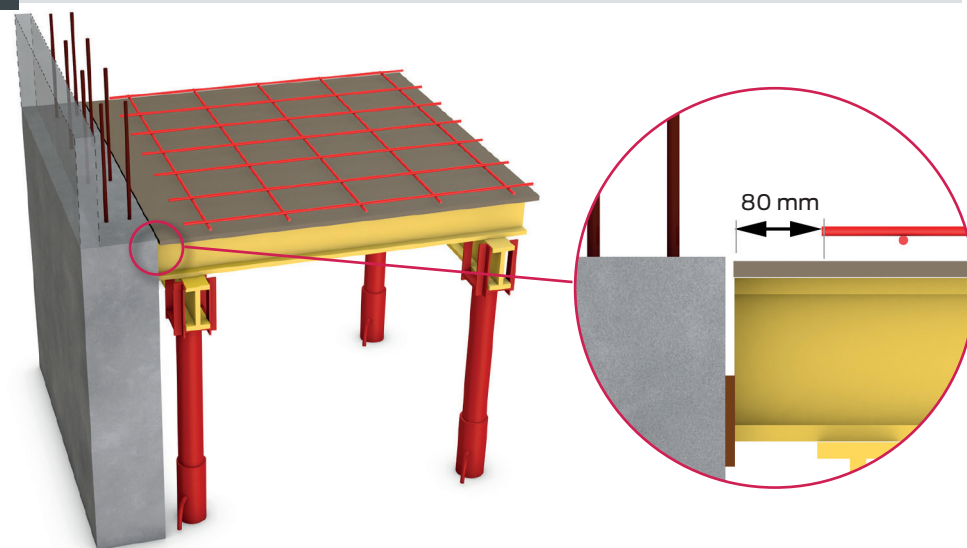
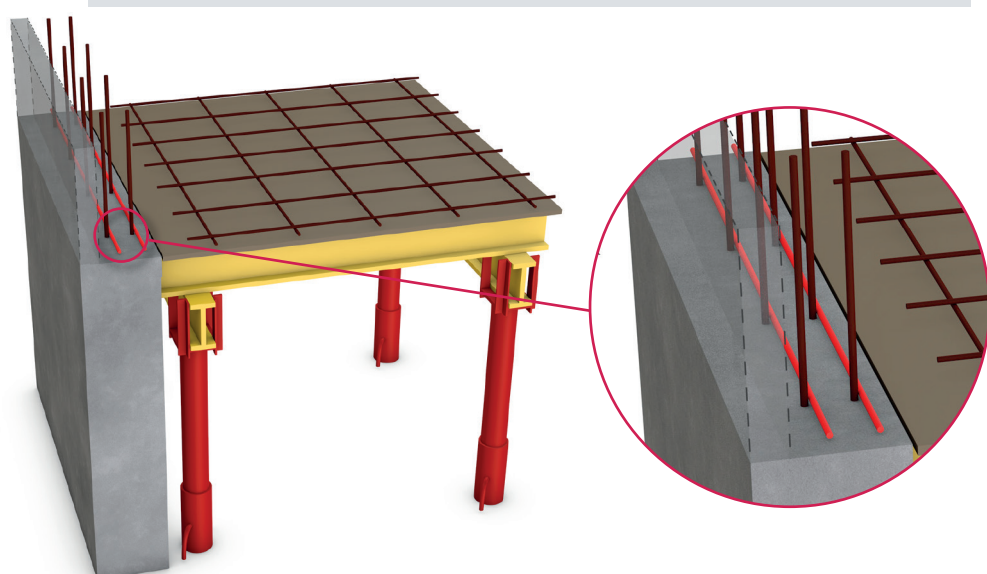
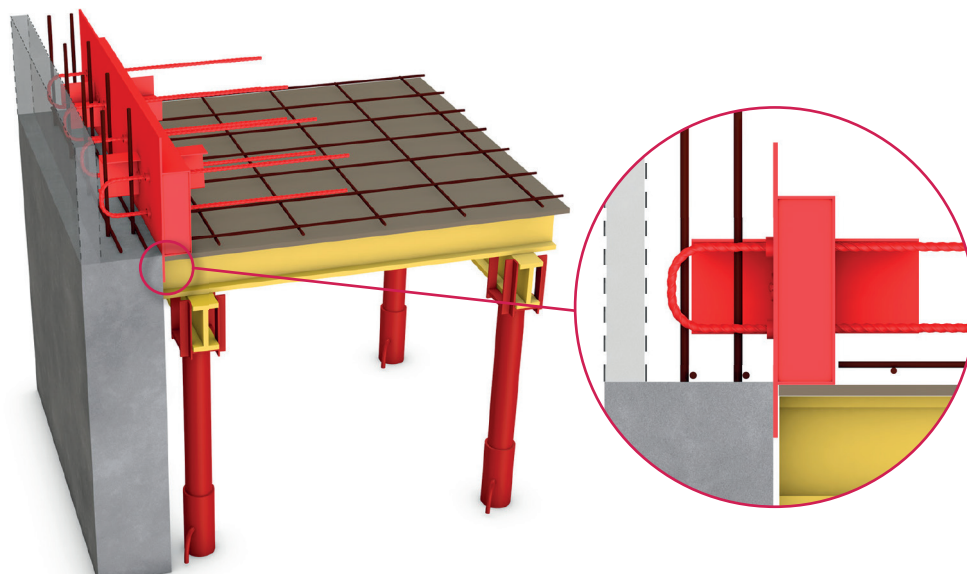
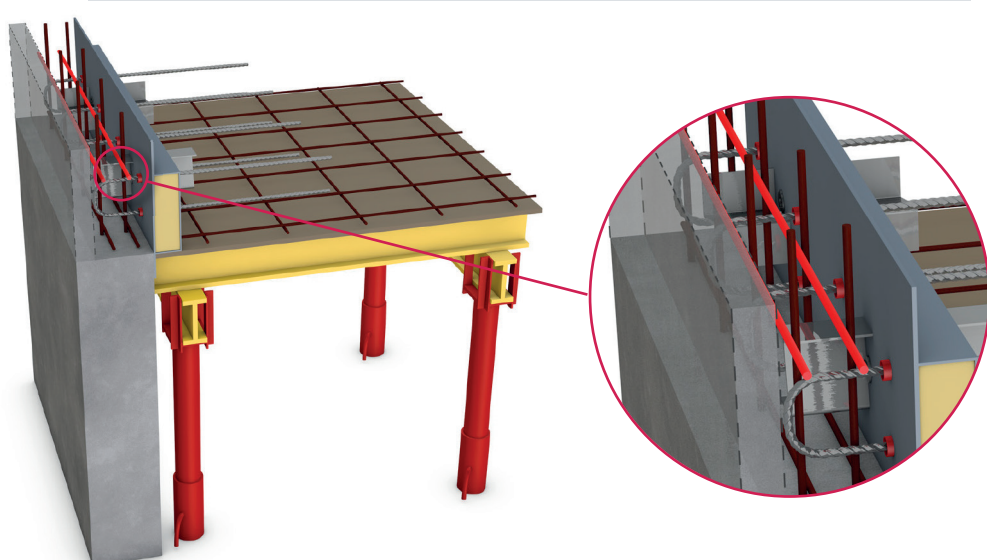
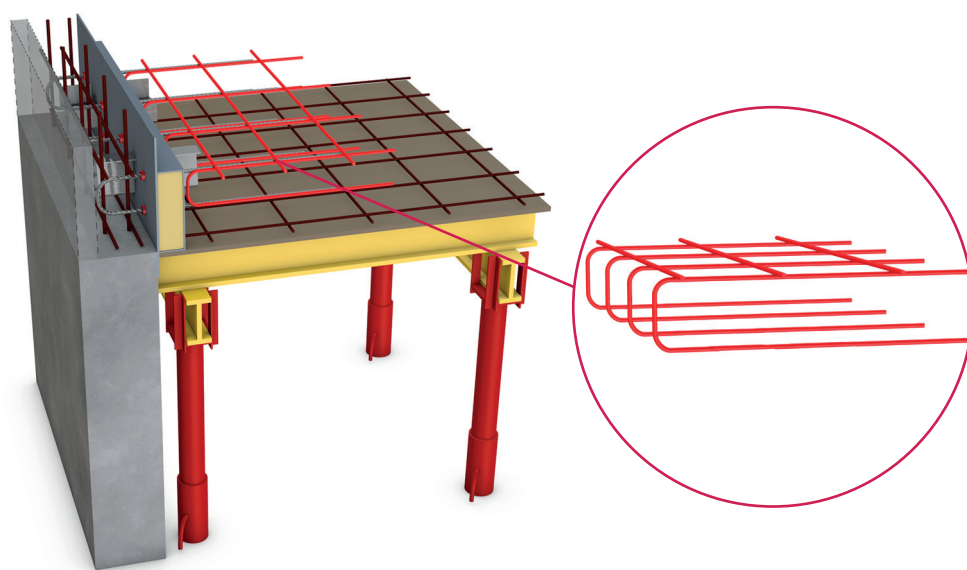
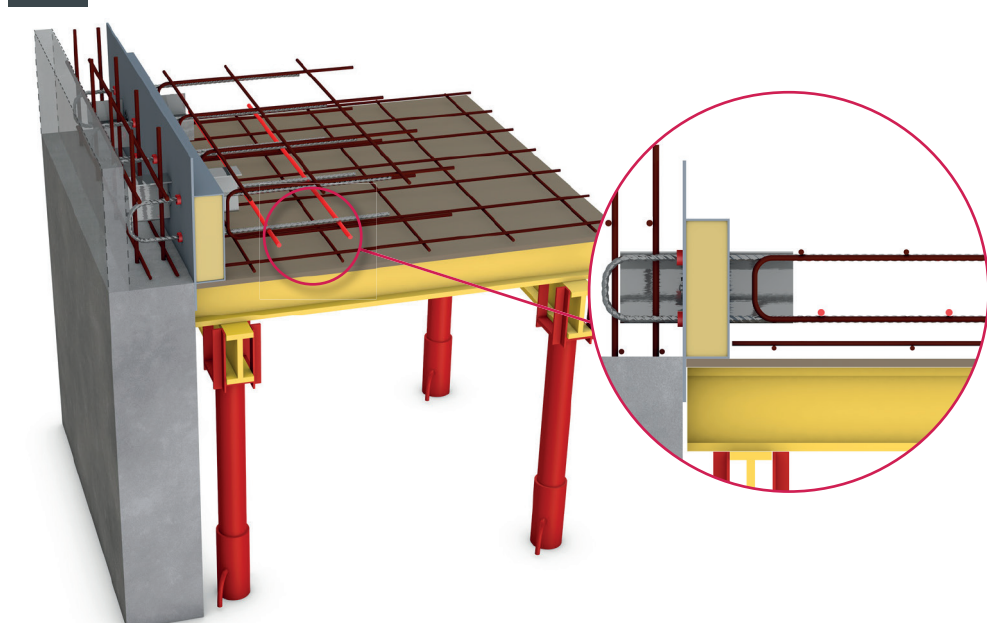


## Slabe® Z - ZN(S) - C(S), CSP

slabe BOÎTIER ISOLANT STRUCTUREL

**1** Coulage du voile et coffrage plancher**2** Pose nappe de treillis inférieure**3** Installation de 2 filants Ø 10 mm (HA10) en tête de voile**4** Installation du Slabe®**5** Installation de 2 filants Ø 8 mm (HA8) en zone statique et Ø 10 mm (HA10) en zone sismique**6** Installation du chaînage de plancher**7** Installation de 2 filants Ø 10 mm (HA10)**8** Coulage de la tête de voile et de la dalle